

**FLORIDA
AUTOMATED
VEHICLES**





FDOT – Transforming Emergency Response with Technologies and Data

Trey Tillander, PE
Florida Department of Transportation
Executive Director of Transportation Technology



Technology Utilization Focus Areas



EMERGENCY
OPERATIONS CENTERS



APPLICATIONS



DASHBOARDS



COMMUNICATIONS
INFRASTRUCTURE



FIELD DEPLOYMENTS

Emergency Operations Centers

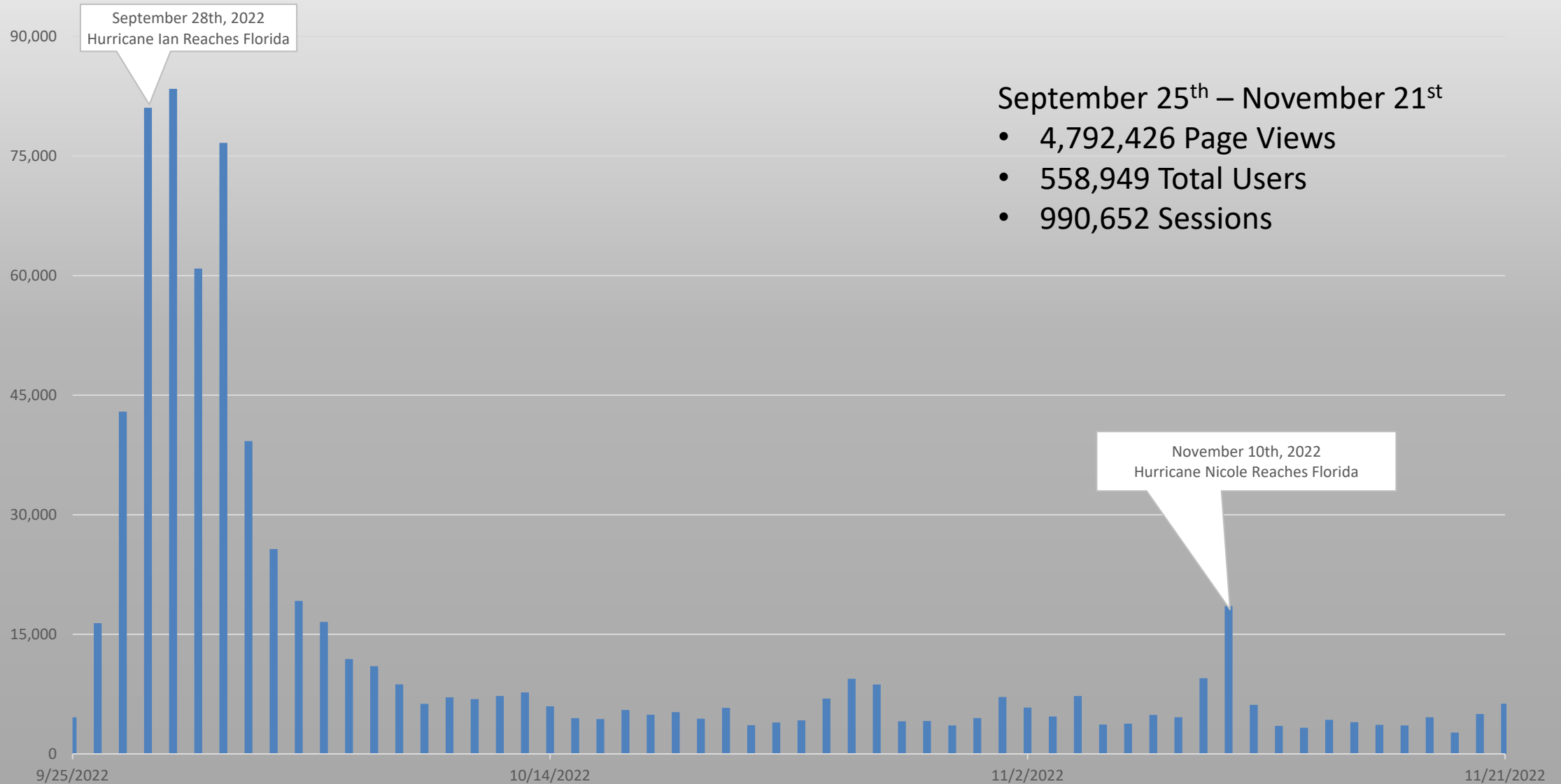


Florida 511 (FL511)

- Official source for real-time traffic information in Florida
- Includes a website, mobile apps, social media pages, email, and text alerts
- Covers all Interstates and most US and state routes in Florida
- Provides information on crashes, congestion, construction, closures, and detour routes
- Helped motorists plan evacuation and return trips by providing real-time road conditions



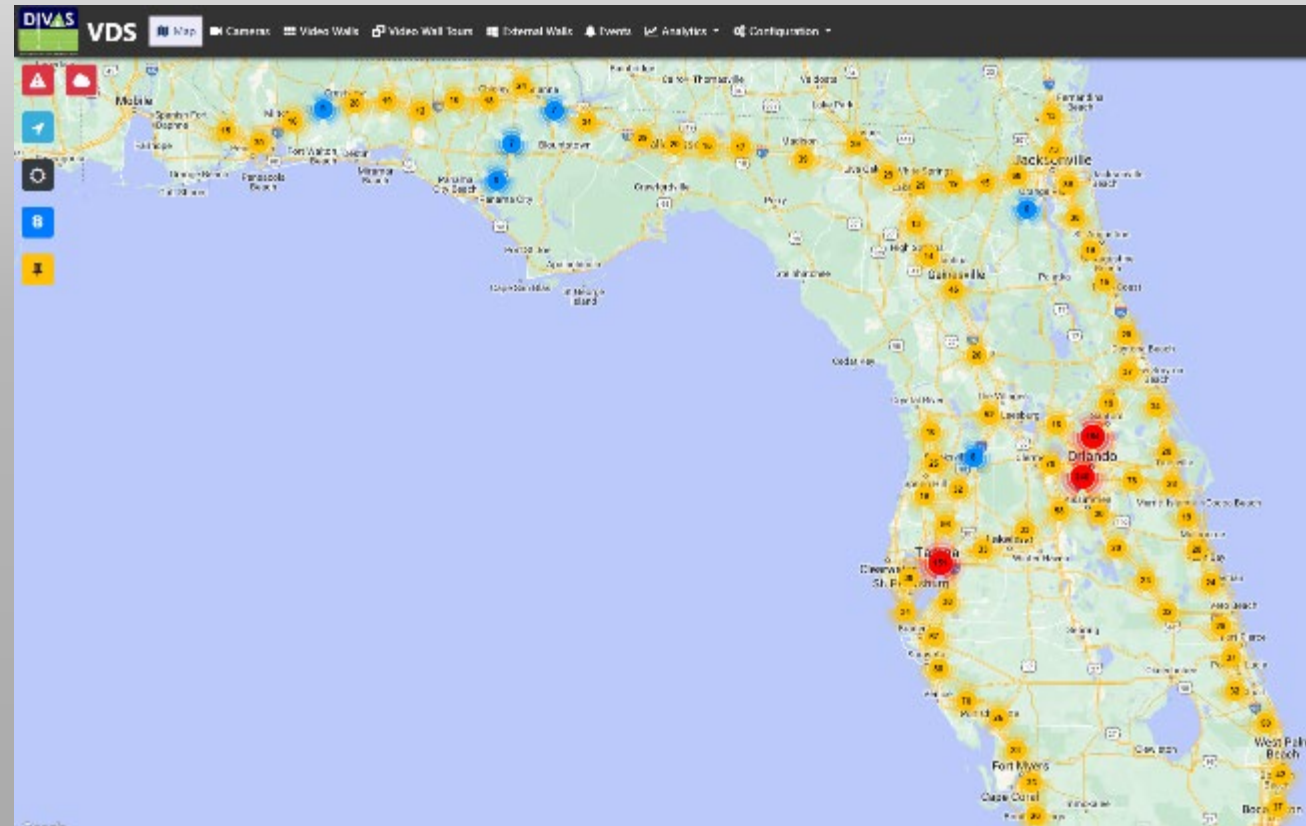
Concurrent FL511 Users



September 25th – November 21st

- 4,792,426 Page Views
- 558,949 Total Users
- 990,652 Sessions

- Streaming video 24/7
 - Roadside traffic monitoring cameras
 - 5 portable video trailers
 - Always-on video feeds were used to monitor and manage construction at both Pine Island and Sanibel Island
- Real-time data from road information weather systems
- ITS devices searchable and filterable through map and list interfaces



DIVAS Video Feeds



EM Trailer



ITS Trailer Camera 1



ITS Trailer Camera 2



ITS Trailer Lite Camera 1



ITS Trailer Lite Camera 2



SunTrax Trailer 1 Camera 1



SunTrax Trailer 1 Camera 2



SunTrax Trailer 2 Camera 1

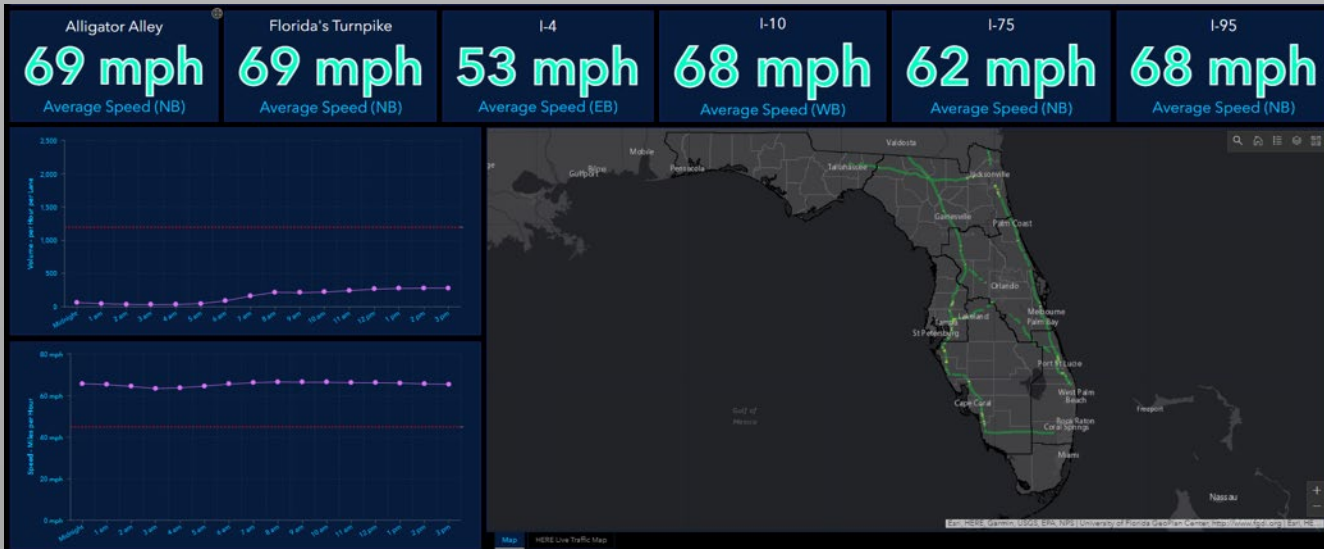
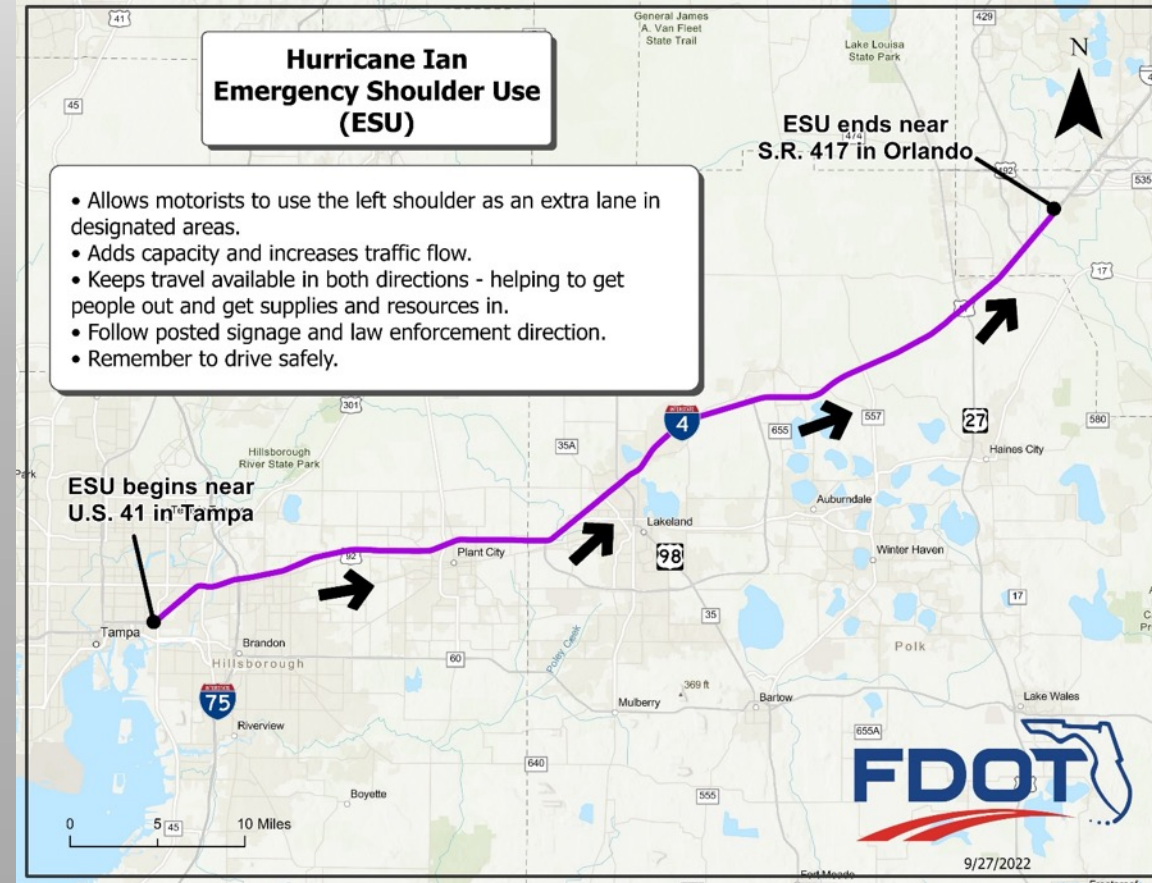


SunTrax Trailer 2 Camera 2

Emergency Shoulder Use



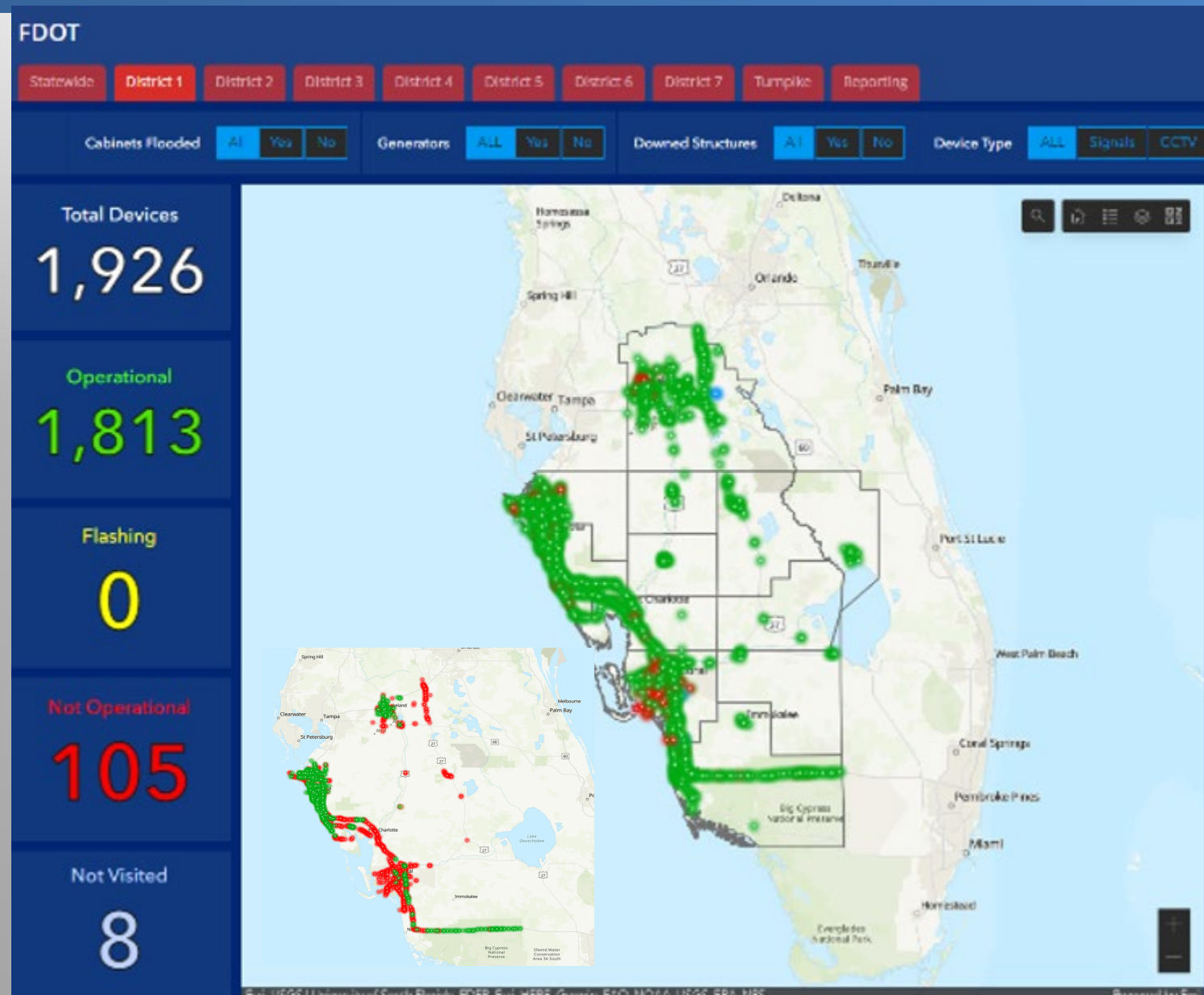
- I-4 Emergency Shoulder Use (ESU) implemented on September 27 from 5:20 PM to 1:14 AM
- Traffic detector data and dashboard supports ESU analysis and implementation



eSTORM Dashboard



- Provides statewide and district-level summary metrics on traffic signal restoration progress
- Can be updated by field response teams via companion smartphone application, including photos
- Provides status updates on:
 - Portable generators deployed
 - Flooded cabinets
 - Downed structures
- Also may be used for dynamic message signs and cameras



Hurricane Ian's I-75 Detour

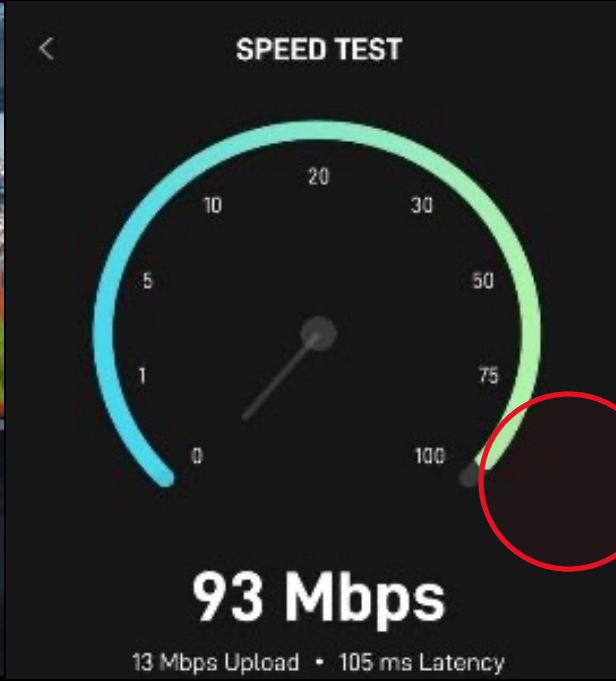


- Two days after Hurricane Ian's coastal impact, I-75 in North Port was threatened by high water and closed
- FDOT worked late into the night to implement its largest detour ever – over 180 miles
- FL511 and the FDOT's social media channels were used to provide advance notification throughout the State
- Permanent Dynamic Message Signs and portable Changeable Message Signs were used to inform travelers

STARLINKs Deployed for:



- Base Camp Communications
- Five portable video trailers
- Sanibel Toll Plaza and FDOT Construction Office (RV)
- Arcadia Maintenance Yard
- Vehicles as “mobile communication links”
- Drone live video feeds from land and water



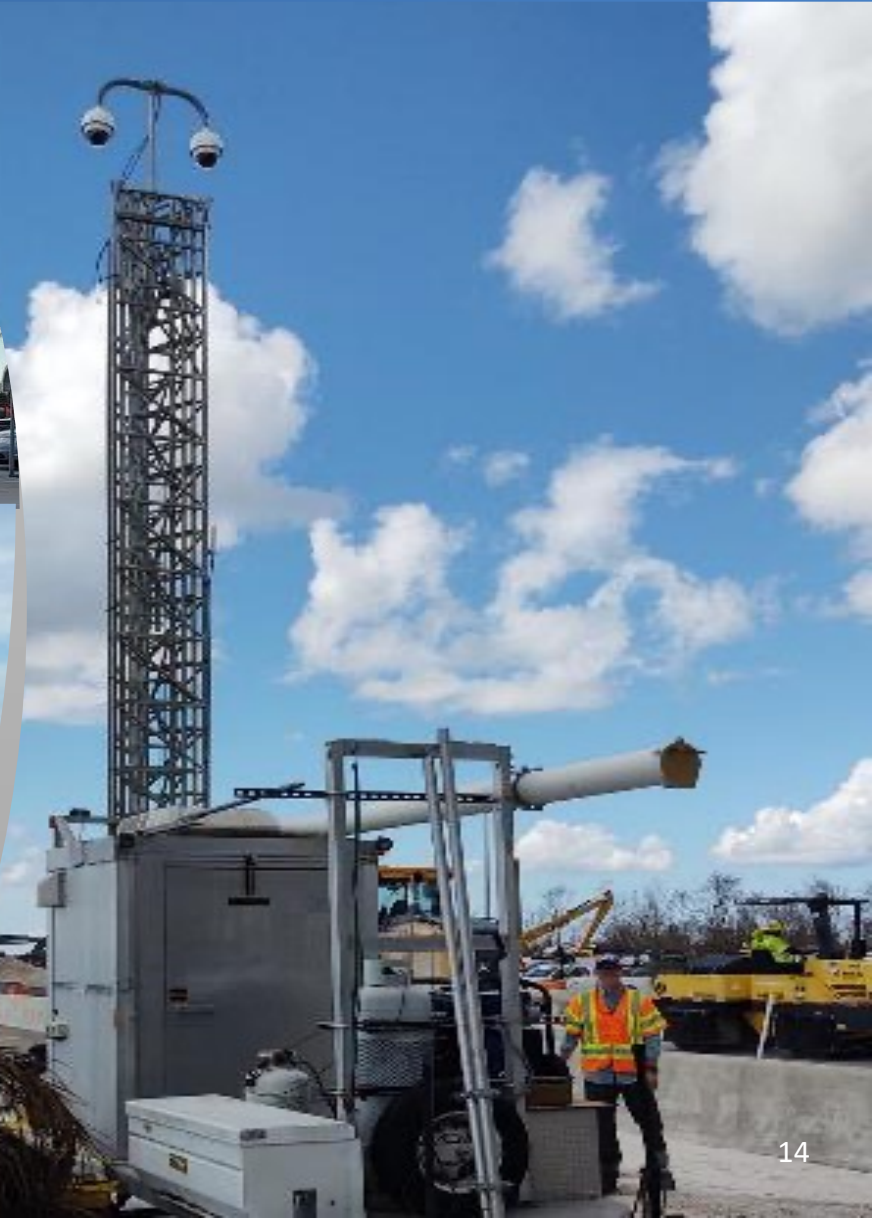
Drones



- Drones provided live-streaming inspection and assessment video to the State Emergency Operations Center and Construction Staff for Pine Island and Sanibel Island causeways

Video Trailers

- Five Video Trailers
 - Dynamic Masts
 - Pan Tilt Zoom Cameras
 - Streaming video
 - Redundant Cellular connectivity with Satellite Backup
 - Long Range WiFi Access Point



Pine Island Footage from Video Trailers



ITS Trailer Lite 1



ITS Trailer Lite 2



ITS Trailer 1



ITS Trailer 2

District 5 Smart Work Zone Trailer (SWZ)



- Solar Panels with Battery Backup
- Two Video Cameras
- Deployed on SR-46 to monitor flooding



Thank You!

MOVE OVER
or slow down for emergency lights.

#MoveOverFL



**FLORIDA
AUTOMATED
VEHICLES**



SUNTRAX

ACCELERATING THE FUTURE OF TRANSPORTATION





THE PATH TO PROGRESS



'17

PROJECT PLANNING

- Secured 475-Acre Parcel
- Auburndale, FL Halfway Between Orlando & Tampa
- 2 Miles from Florida Polytechnic University

'19

HIGH-SPEED OVAL TRACK

- 2.25-Mile Track Completion
- 4 Specialized Gantries
- 20,000 Sq. Ft Welcome Center

'22

INFIELD SECTORS & SUPPORT

- 10 Secured Sectors
- Precision Driving Surfaces
- Advanced Private Connectivity
- Ideal Climate for Year-Round Testing

'23

ESTABLISH OPERATING PARTNERS

- Industry Forum - 12/22
- Operator Procurement
- Partner Testing

NORTH AMERICA'S LATEST TESTING CENTER FOR TRANSPORTATION INNOVATION



**FLORIDA
AUTOMATED
VEHICLES**

